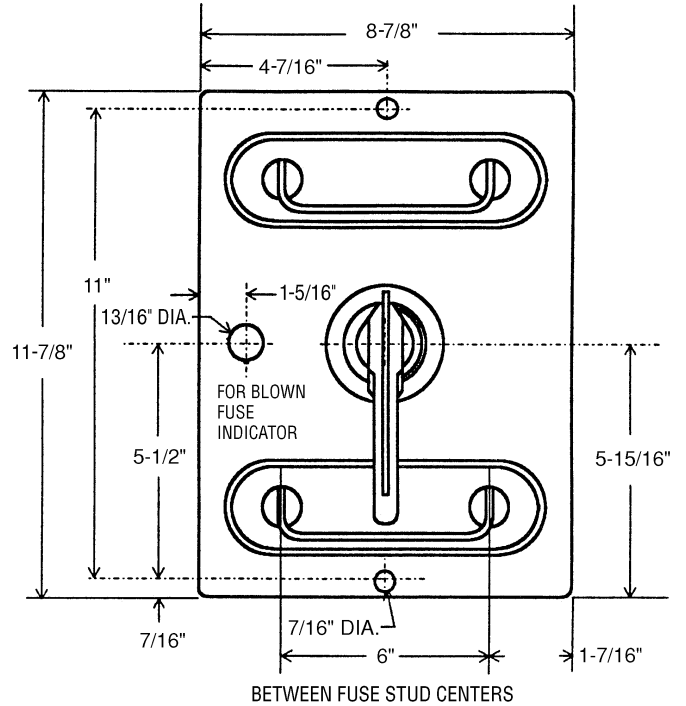




TYPE: TR-22-6001-03 – 60 Vdc, 70-600 Amps



Switch Characteristics

Current Rating: 70-600 Amps

Voltage Rating: 60 Volts DC

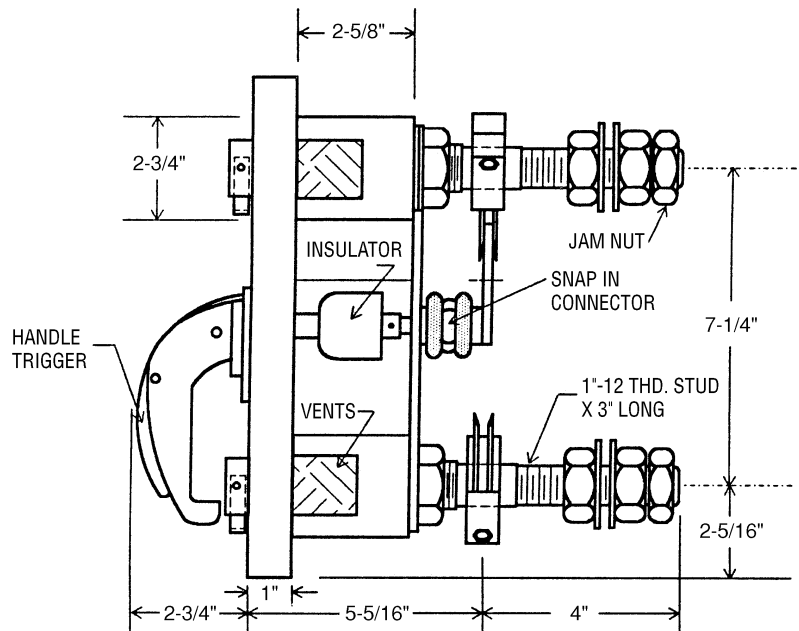
UL Withstand Rating: 10,000 Amps

Agency Approvals

UL Recognized, File E122674

Fuses

For use with Littelfuse® Type L17T or Telpower® Type TPL fuses



Please contact us for additional connection options.