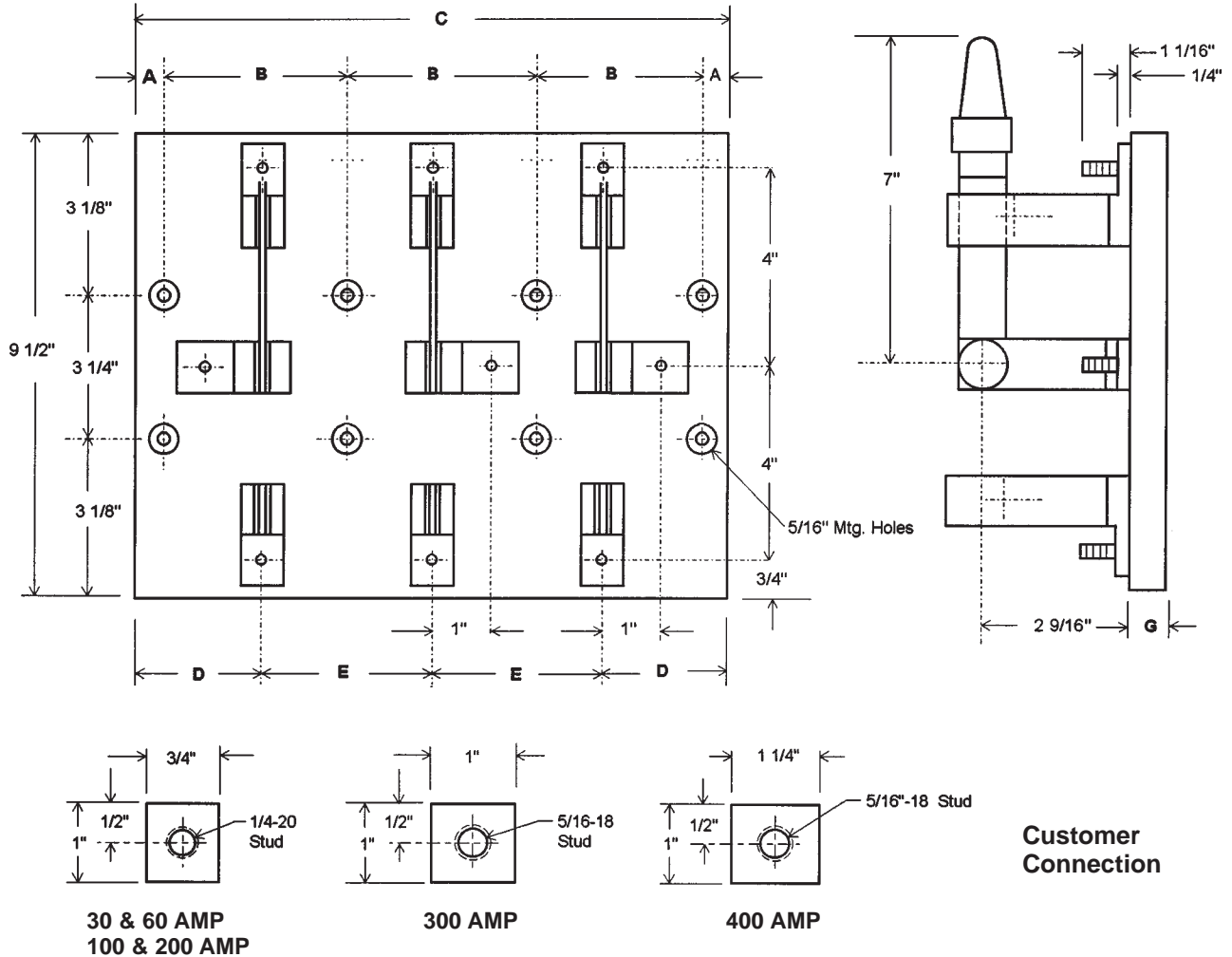




## TYPE A - Double Throw - Front Connected: 30, 60, 100, 200, 300 and 400 Amp

Shown as Basic Switch. For options, download [Info/Opt.pdf](#)



Customer Connection

NOTE: 100 to 400 Amp – Parts silver plated, insulation red polyglass

### 30, 60, 100, 200, 300 and 400 AMP — 250 VDC / 500 VAC

### 600 VDC / VAC

POLES	A	B	C	D	E	G	No. of Mtg. Holes
Single	5/8	3 1/2	4 3/4	2 3/8	—	3/4	4
Two	5/8	3 1/2	8 1/4	2 7/8	2 1/2	3/4	6
Three	5/8	3 1/2	11 3/4	2 3/8	3 1/2	3/4	8

G
1
1
1