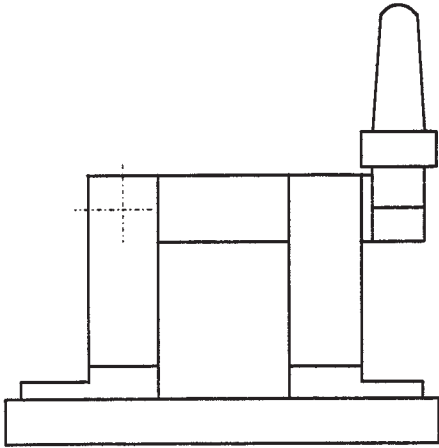
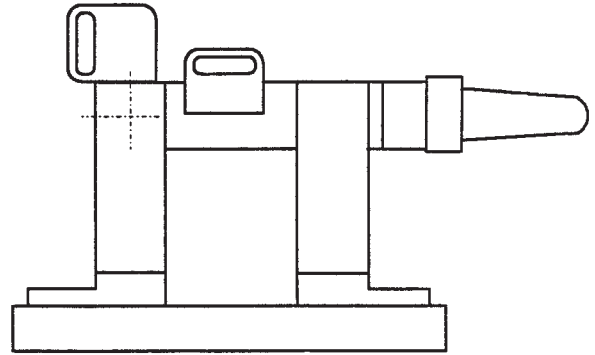




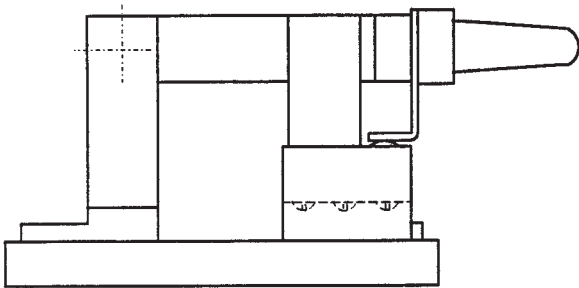
Knife Switch Options



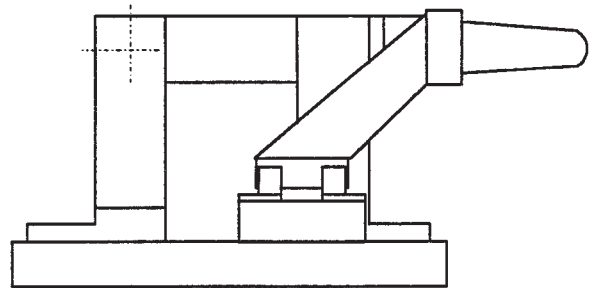
Handle on Front



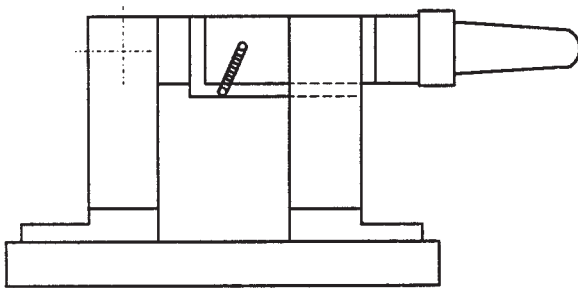
Padlock Attachment and 90° Stop



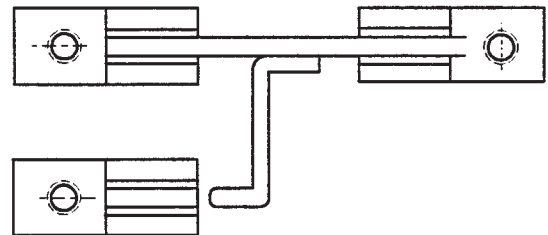
Micro Type Auxillary Switch
base will be extended 1.25" per switch



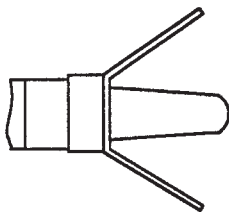
Knife Type Auxillary Switch
base will be extended 1.25" per switch



Flipper Blade (Field Discharge)



Field Discharge Pole
base will be extended 1.25" per switch



Hand Guard

Tolerances $\pm .015$ " for the hole diameters. Other tolerances $\pm .030$ " unless specified.
Dimensions subject to change without notice.