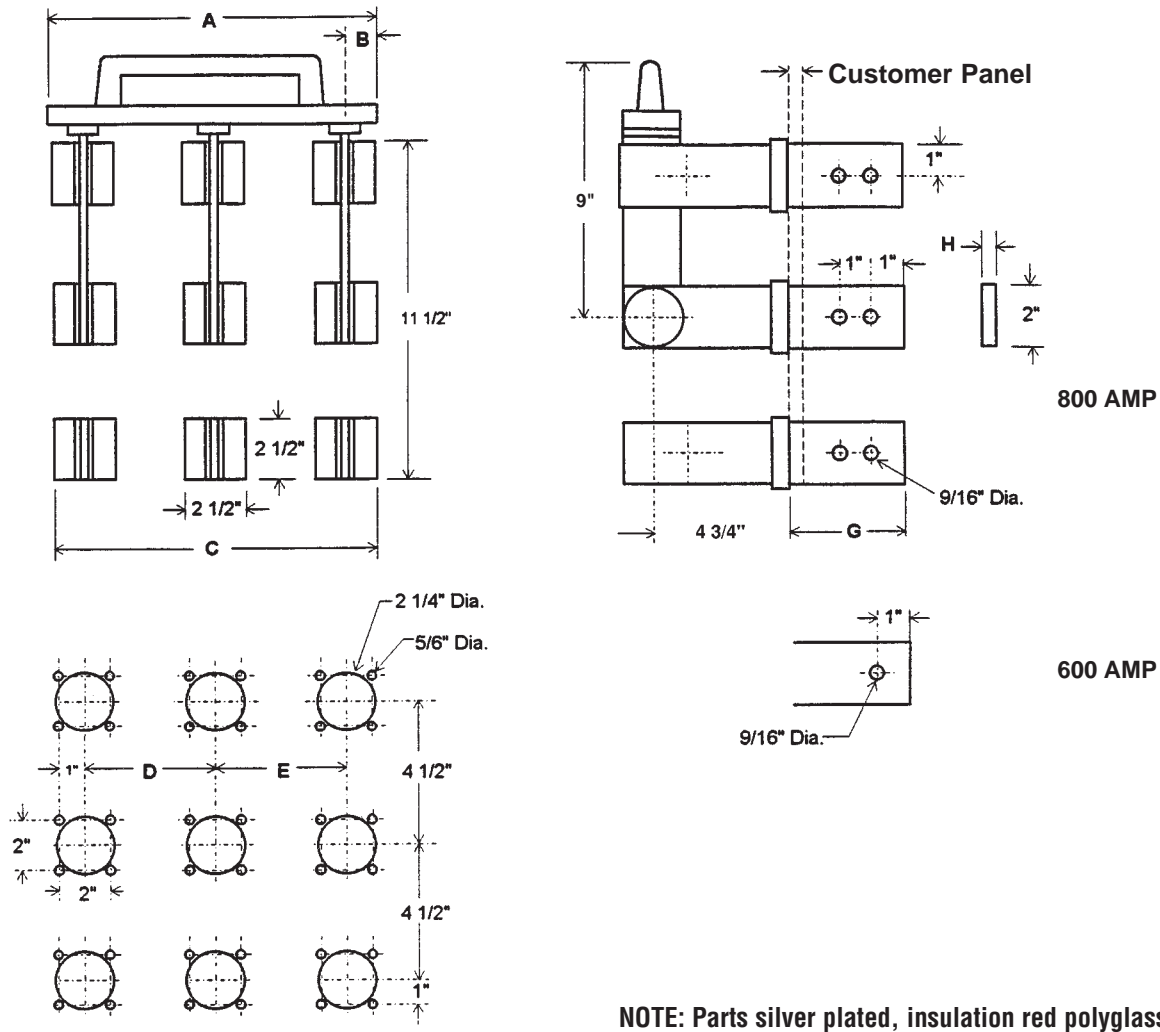




# Knife Switches

## TYPE B - Double Throw - Back Connected: 600 and 800 Amp

Shown as Basic Switch. For options, download Info/Opt.pdf



Panel Drilling

NOTE: Parts silver plated, insulation red polyglass

### 600 and 800 AMP — 600 VDC / VAC OR LESS

POLES	A	B	C	D	E	600 AMP		800 AMP	
						G	H	G	H
Single	6¼	3⅝	2½	—	—	3	¼	4	¾
Two	6¼	1	6¾	4¼	—	3	¼	4	¾
Three	9¼	¾	11	4¼	4¼	3	¼	4	¾