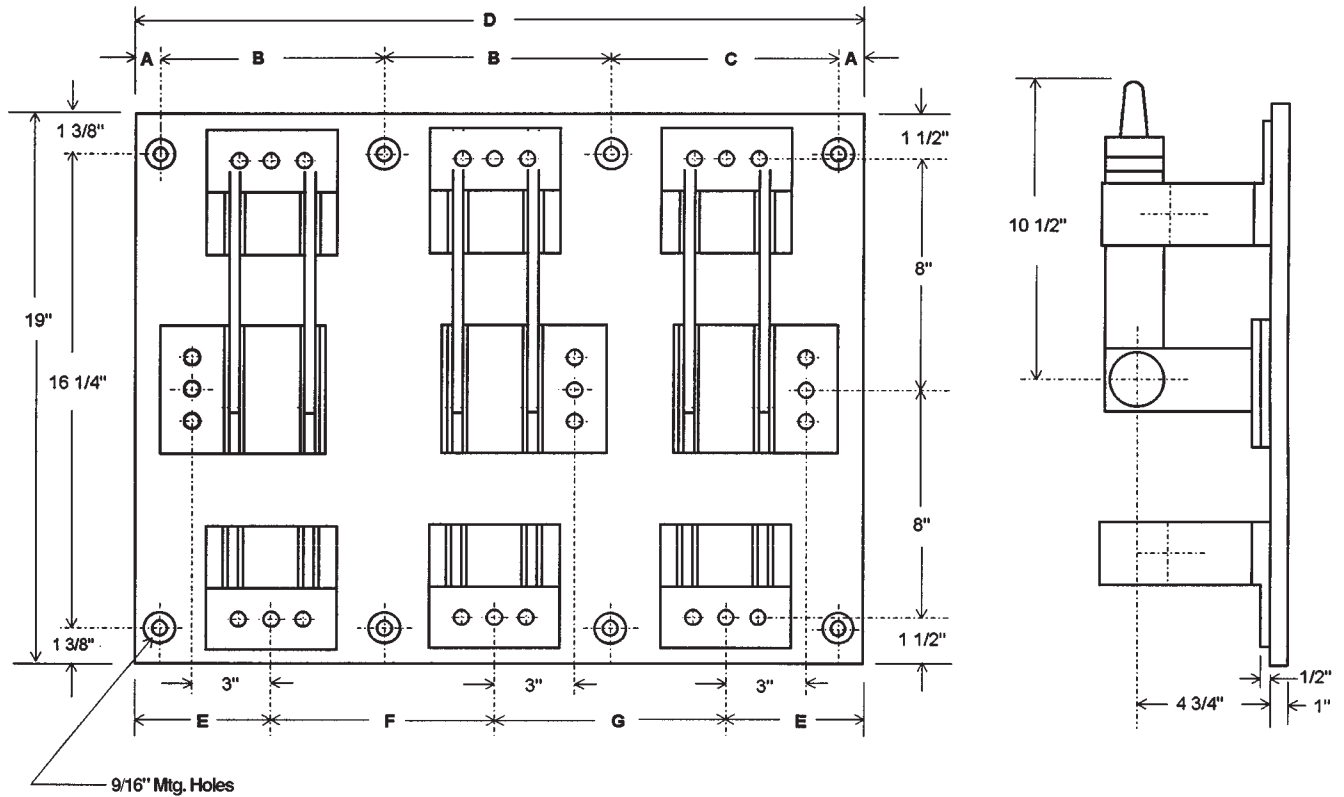




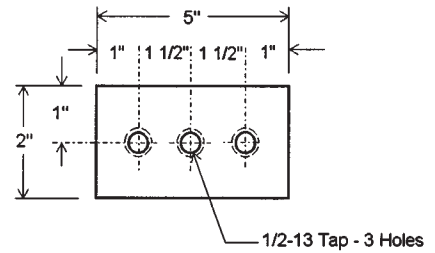
TYPE A - Double Throw - Front Connected: 1600 Amp

Shown as Basic Switch. For options, download Info/Opt.pdf



NOTE: Parts silver plated, insulation red polyglass

Customer Connection



1600 AMP — 600 VDC / VAC OR LESS

POLES	A	B	C	D	E	F	G	No. of Mtg. Holes
Single	5/8	7 3/4	—	9	4 1/2	—	—	4
Two	3/4	8	—	17 1/2	4 3/4	8	—	6
Three	3/4	8	8 1/2	26	4 3/4	8	8 1/2	8

Tolerances ± .015 for the hole diameters. Other tolerances ± .030 unless specified. Dimensions subject to change without notice.