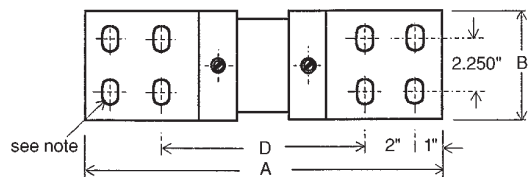
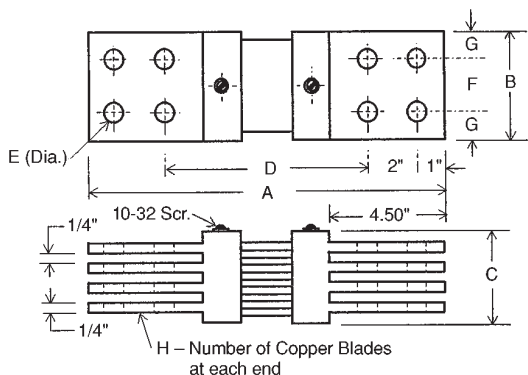
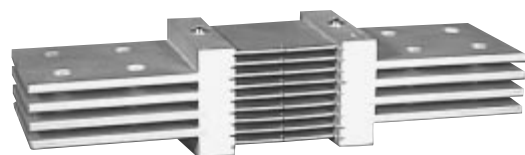




TYPE H: 2,500 through 10,000 Amperes



NOTE: *Elongated holes 0.562" x 0.750" for range 7000A to 12000A will accommodate 2" or 2.5" hole centers.

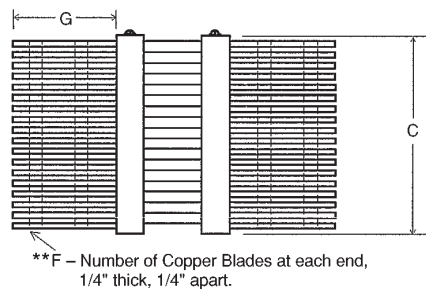
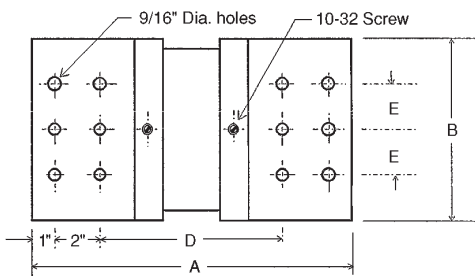
TYPE H: 50 mV

Catalog Number	AMP	A	B	C	D	E	F	G	H
H-2500-50	2500	12.62	4	1.50	6.62	0.56	2	1	2
H-3000-50	3000	12.62	4	2	6.62	0.56	2	1	3
H-4000-50	4000	12.62	4	3	6.62	0.56	2	1	4
H-4500-50	4500	12.62	4	3	6.62	0.56	2	1	4
H-5000-50	5000	12.62	4	3	6.62	0.56	2	1	4
H-6000-50	6000	12.62	4	4	6.62	0.56	2	1	5
H-7000-50	7000	12.62	5	4	*	*	*	1.25	5
H-7500-50	7500	12.62	5	4	*	*	*	1.25	6
H-8000-50	8000	12.62	5	4	*	*	*	1.25	6
H-9000-50	9000	12.62	5	4	*	*	*	1.25	6
H-10000-50	10000	12.62	5	5	*	*	*	1.25	7

TYPE H: 100 mV

Catalog Number	AMP	A	B	C	D	E	F	G	H
H-2500-100	2500	14.25	4	1.50	8.25	0.56	2	1	2
H-3000-100	3000	14.25	4	2	8.25	0.56	2	1	3
H-4000-100	4000	14.25	4	3	8.25	0.56	2	1	4
H-4500-100	4500	14.25	4	3	8.25	0.56	2	1	4
H-5000-100	5000	14.25	4	3	8.25	0.56	2	1	4
H-6000-100	6000	14.25	4	4	8.25	0.56	2	1	5
H-7000-100	7000	14.25	5	4	*	*	*	1.25	5
H-7500-100	7500	14.25	5	4	*	*	*	1.25	6
H-8000-100	8000	14.25	5	4	*	*	*	1.25	6
H-9000-100	9000	14.25	5	4	*	*	*	1.25	6
H-10000-100	10000	14.25	5	5	*	*	*	1.25	7

TYPE H: over 10,000 Amperes



TYPE H: 50 mV

Catalog Number	AMP	A	B	C	D	E	F	G
H-12 000-50	12 000	12.62	5	6	6.62	***	9	4.50
H-15 000-50	15 000	13	8	6	7	2	9	4.68
H-18 000-50	18 000	13	8	6	7	2	10	4.68
H-20 000-50	20 000	13	8	6	7	2	10	4.68
H-25 000-50	25 000	13	8	10	7	2	18	4.68
H-30 000-50	30 000	15.68	8	12	9.68	2	22	5.53

TYPE H: 100 mV

Catalog Number	AMP	A	B	C	D	E	F	G
H-12 000-100	12 000	14.25	5	6	8.25	***	9	4.50
H-15 000-100	15 000	14.62	8	6	8.25	2	9	4.68
H-18 000-100	18 000	14.62	8	6	8.25	2	10	4.68
H-20 000-100	20 000	14.62	8	6	8.25	2	10	4.68
H-25 000-100	25 000	14.62	8	10	8.25	2	18	4.68
H-30 000-100	30 000	17.31	8	12	11.31	2	22	5.53

NOTE: **F - 3/8" or 1/2" terminal blades also available. ***Four elongated holes 0.562" x 0.750" at each end, 2.250" on center.