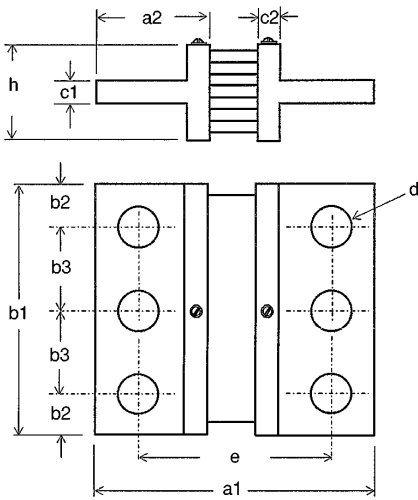




860 Form C



Rated	2501A to 4000A		4001A to 6000A		6001 to 10000A		10001A to 15000A	
Model No.	867		868		869		869	
Dim.	mm	inch	mm	inch	mm	inch	mm	inch
a1	165	6.496	175	6.889	185	7.283	185	7.283
a2	65	2.559	70	2.755	75	2.952	75	2.952
b1	120	4.724	154	6.062	206	8.110	310	12.204
b2	30	1.181	25	0.984	25	0.984	25	0.984
b3	60	2.362	52	2.047	52	2.047	52	2.047
c1	15	0.590	25	0.984	30	1.181	30	1.181
c2	10	0.393	15	0.590	20	0.787	20	0.787
d	20.63	0.812	20.63	0.812	20.63	0.812	20.63	0.812
e	115	4.527	125	4.921	135	5.314	135	5.314
h	60	2.362	130	5.118	170	6.692	170	6.692

Rated	1001A to 1500A		1501A to 2500A		2501A to 4000A		4001A to 6000A		6001A to 10000A		10001A to 15000A	
Model No.	867		867		868		868		869		869	
Dim.	mm	inch	mm	inch	mm	inch	mm	inch	mm	inch	mm	inch
a1	290	11.417	290	11.417	300	11.811	300	11.811	310	11.811	310	11.811
a2	65	2.559	65	2.559	70	2.755	70	2.755	75	2.952	75	2.952
b1	90	3.543	120	4.724	120	4.724	154	6.062	206	8.110	310	11.811
b2	21	0.826	30	1.181	30	1.181	25	0.984	25	0.984	25	0.984
b3	48	1.889	60	2.362	60	2.362	52	2.047	52	2.047	52	2.047
c1	15	0.590	15	0.590	25	0.984	25	0.984	30	1.181	30	1.181
c2	10	0.393	10	0.393	15	0.590	15	0.590	20	0.787	20	0.787
d	16.66	0.656	20.63	0.812	20.63	0.812	20.63	0.812	20.63	0.812	20.63	0.812
e	240	9.448	240	9.448	250	9.448	250	9.448	260	10.236	260	10.236
h	60	2.362	60	2.362	130	5.118	130	5.118	170	6.692	170	6.692

860 Series

Designed and manufactured to comply with the requirements of DIN 43 703 for dimensions and DIN 43 780 for performance.

Accuracy class 0.5%

Class 0.25% also available

Overload 120% rated current continuously

5 second ratings:

1A – 500A = 10 times rated current

501A – 2000A = 5 times rated current

2001A – 15000A = 2 times rated current

Temperature coefficient: 0.002% per °C overall

Calibrated for 23°C with the working range of -20°C to +60°C

Maximum load: for maximum accuracy, load should not exceed 0.1% of the shunt current rating.