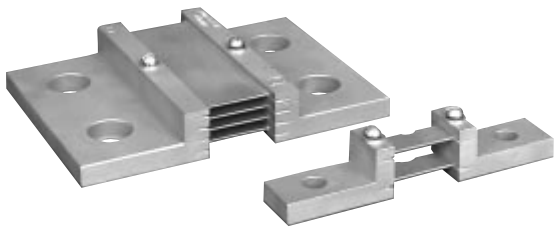
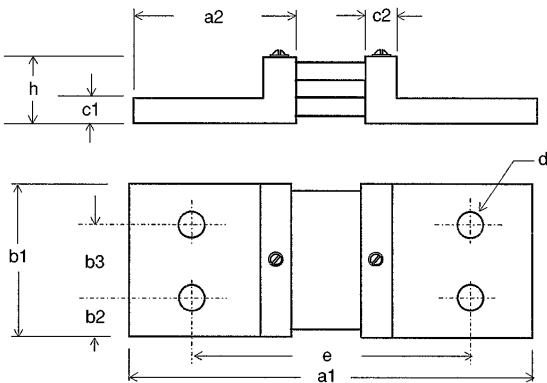




860 Form B



Rated		151A to 250A		251A to 600A		601A to 1000A		1001A to 1500A		1501A to 2500A	
Model No.		863		863		864		864		864	
60 mV	Dim.	mm	inch	mm	inch	mm	inch	mm	inch	mm	inch
	a1	145	5.708	145	5.708	165	6.496	165	6.496	165	6.496
	a2	55	2.165	55	2.165	65	2.559	65	2.559	65	2.559
	b1	30	1.181	40	1.574	60	2.362	90	3.543	120	4.724
	b2	15	0.590	20	0.787	30	1.181	21	0.826	30	1.181
	b3	—	—	—	—	—	—	48	1.889	60	2.362
	c1	10	0.393	10	0.393	10	0.393	10	0.393	10	0.393
	c2	10	0.393	10	0.393	10	0.393	10	0.393	10	0.393
	d	12.7	0.500	16.66	0.656	20.63	0.812	16.66	0.656	20.63	0.812
	e	105	4.133	105	4.133	115	4.527	115	4.257	115	4.527
h	30	1.181	30	1.181	30	1.181	30	1.181	30	1.181	



Rated		151A to 250A		251A to 600A		601A to 1000A	
Model No.		865		865		866	
150 mV	Dim.	mm	inch	mm	inch	mm	inch
	a1	270	10.629	270	10.629	290	11.417
	a2	55	2.165	55	2.165	65	2.559
	b1	30	1.181	40	1.574	70	2.559
	b2	15	0.590	20	0.787	35	1.377
	b3	—	—	—	—	—	—
	c1	10	0.393	10	0.393	10	0.393
	c2	10	0.393	10	0.393	10	0.393
	d	12.7	0.500	16.66	0.656	20.63	0.812
	e	230	9.055	230	9.055	240	9.448
h	50	1.968	50	1.968	60	2.362	

860 Series

Designed and manufactured to comply with the requirements of DIN 43 703 for dimensions and DIN 43 780 for performance.

Accuracy class 0.5%

Class 0.25% also available

Overload 120% rated current continuously

5 second ratings:

1A – 500A = 10 times rated current

501A – 2000A = 5 times rated current

2001A – 15000A = 2 times rated current

Temperature coefficient: 0.002% per °C overall

Calibrated for 23°C with the working range of -20°C to +60°C

Maximum load: for maximum accuracy, load should not exceed 0.1% of the shunt current rating.